

## **1. SITE CONDITION DOCUMENTATION:** By Alco Doors

(Five different conditions have been identified and documented.  
Project site information will be posted in Buzzsaw.)

- Bulkhead condition
- R.O.W. (rough opening width) measurement for closet opening
- Quantities per project
- Bathroom door swing & "Right" vs. "Left" Room types

## **2. CONSOLIDATION OF DOOR'S COMPONENTS:** By Alco Doors

(Hollow metal frame, hardware to include (6) hinges, (2) pulls & (1) top catch)

## **3. DISTRIBUTION:** By Alco Doors

- One week prior to (MI PM defined) delivery date Alco Doors will contact project's contractor
- 48 hours prior to delivery Alco Doors will contact the project's superintendent to coordinate delivery
- Delivery truck will arrive on site and will stay for 24 hours to unload
  - A. 140 doors and frames per each delivery capacity
  - B. Contractor will need approx. 16' on site for doors storage

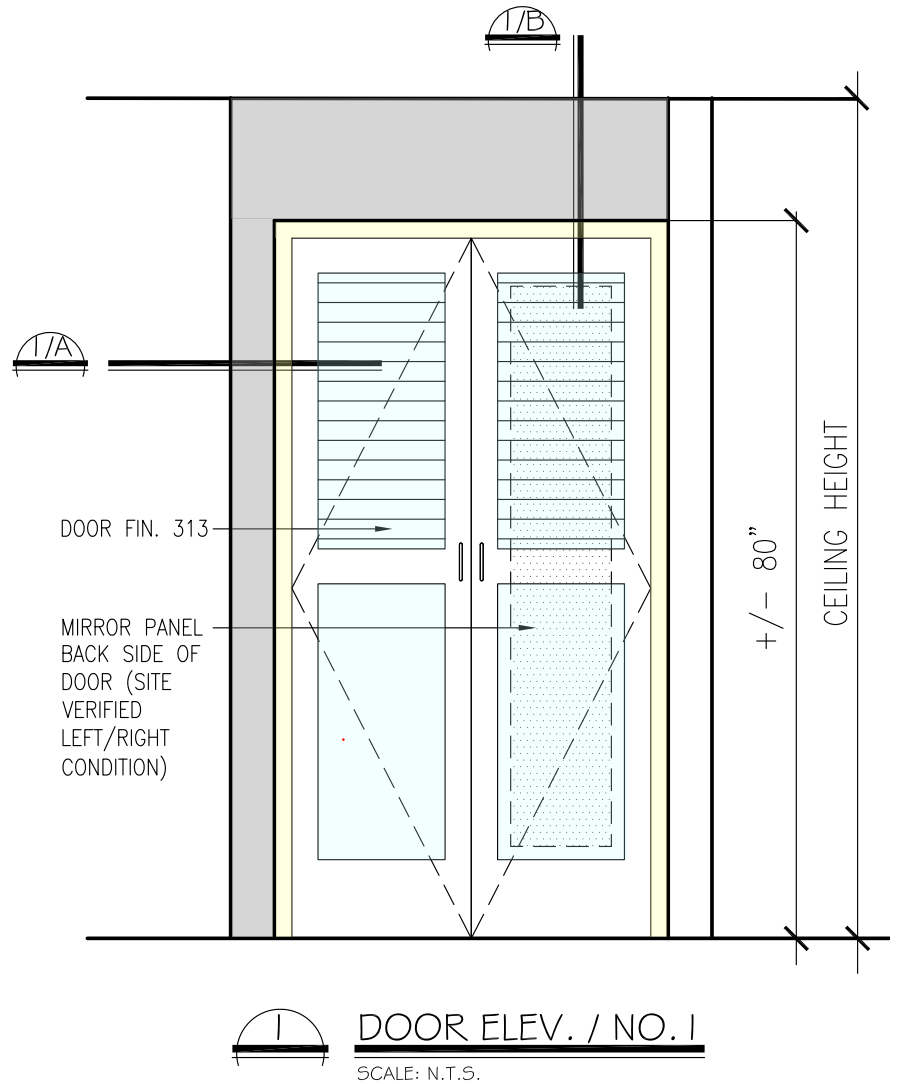
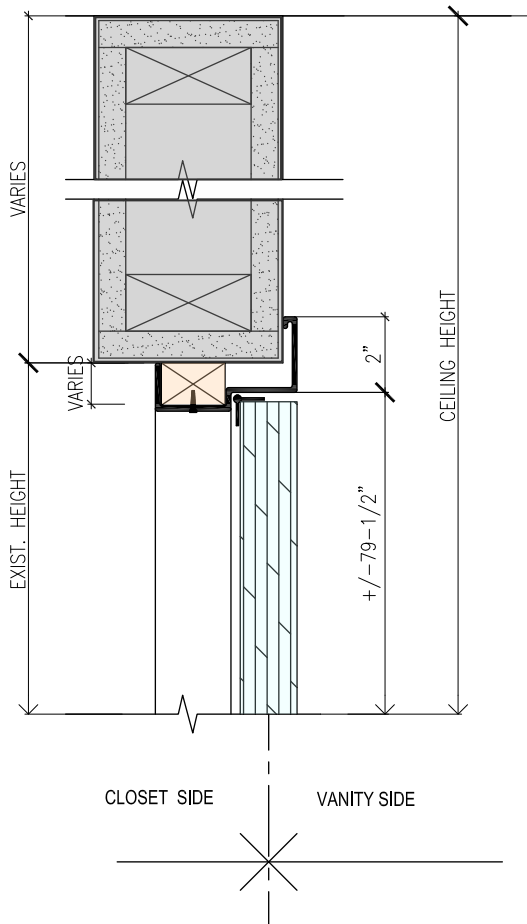
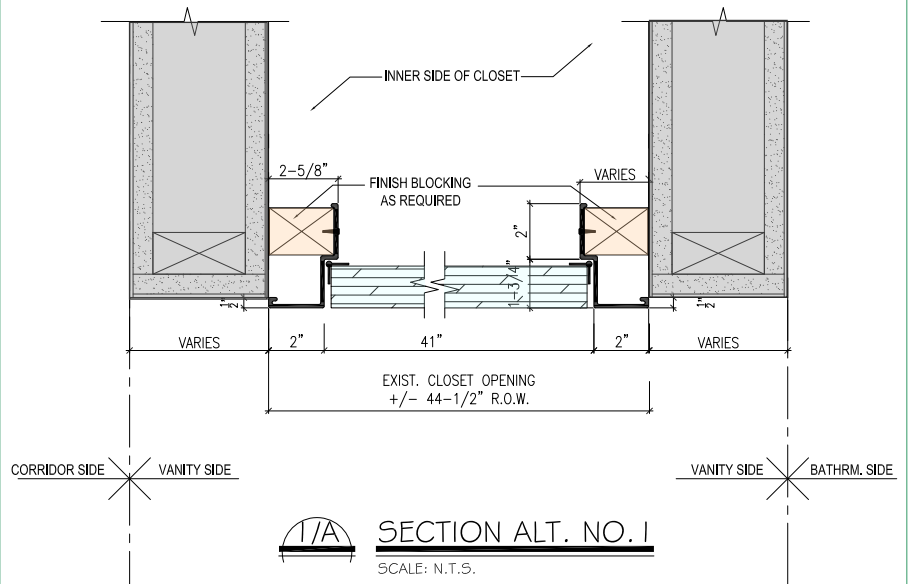
## **4. DOOR INSTALLATION:** By Contractor

- Existing wall vinyl will not be altered
- Blocking will be required by contractor for door frame attachment
- Installation of frame and door & hardware
- Application of frame and door paint finish (No.313) and bulkhead paint finish (No.351-P)



## CONDITION NO.1

SCALE: N.T.S.

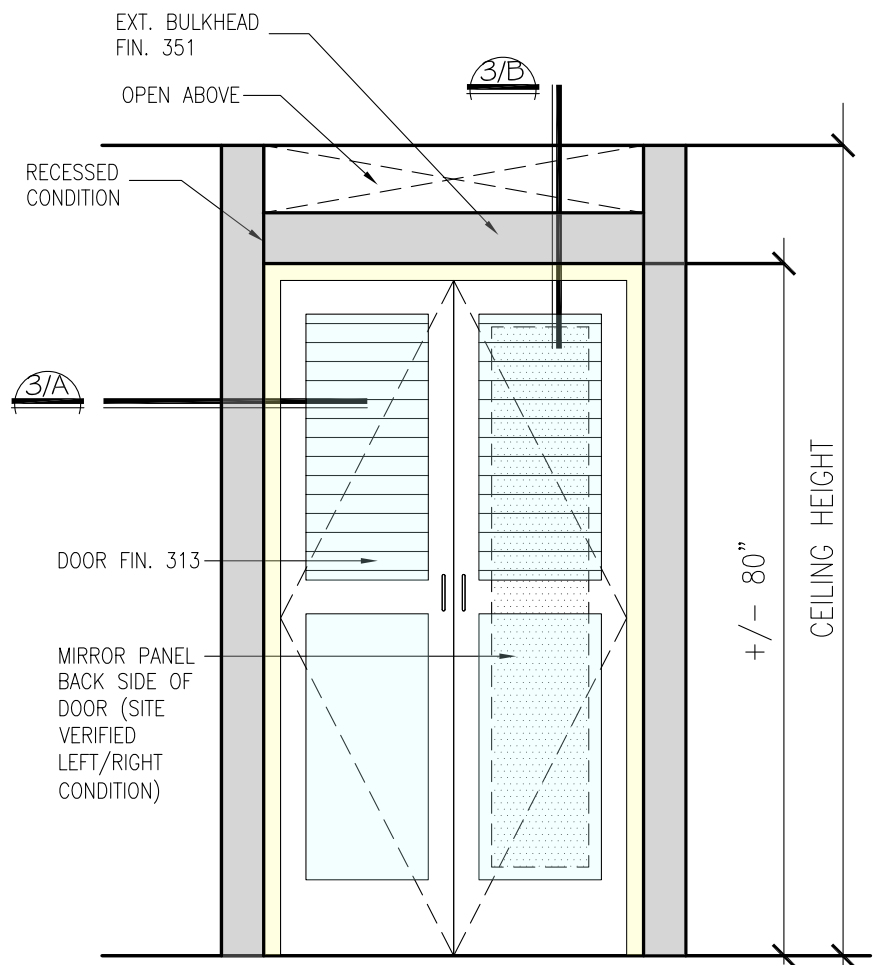
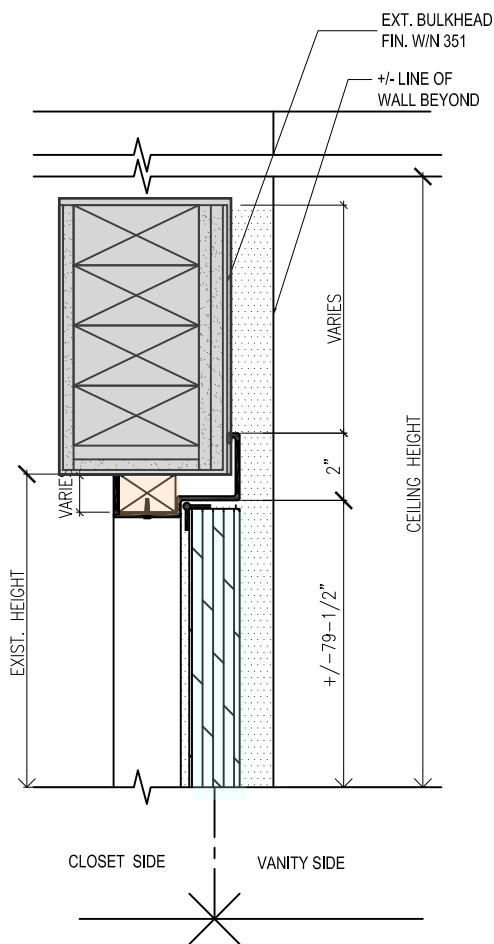
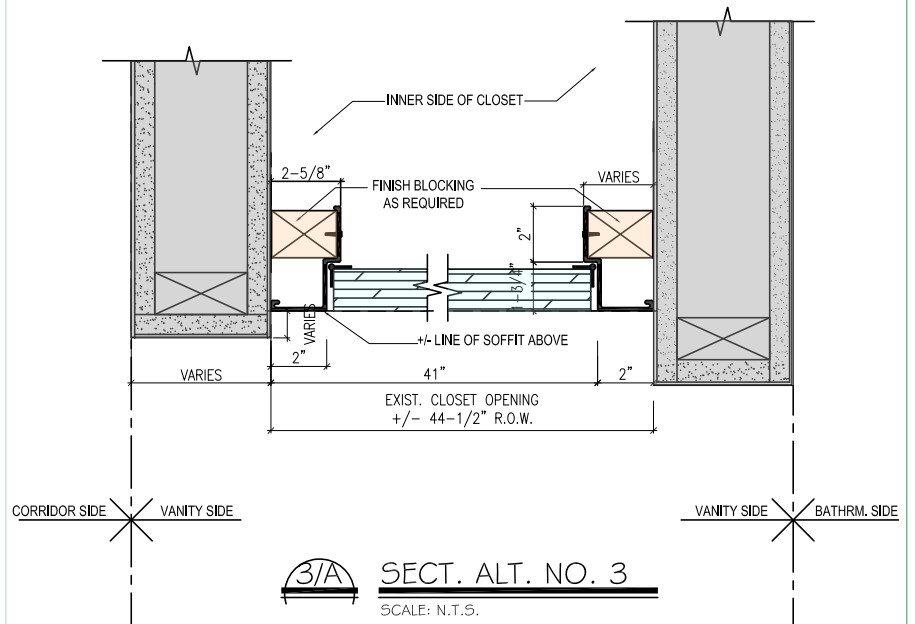






### CONDITION NO.3

SCALE: N.T.S.





4

## CONDITION NO. 4

SCALE: N.T.S.

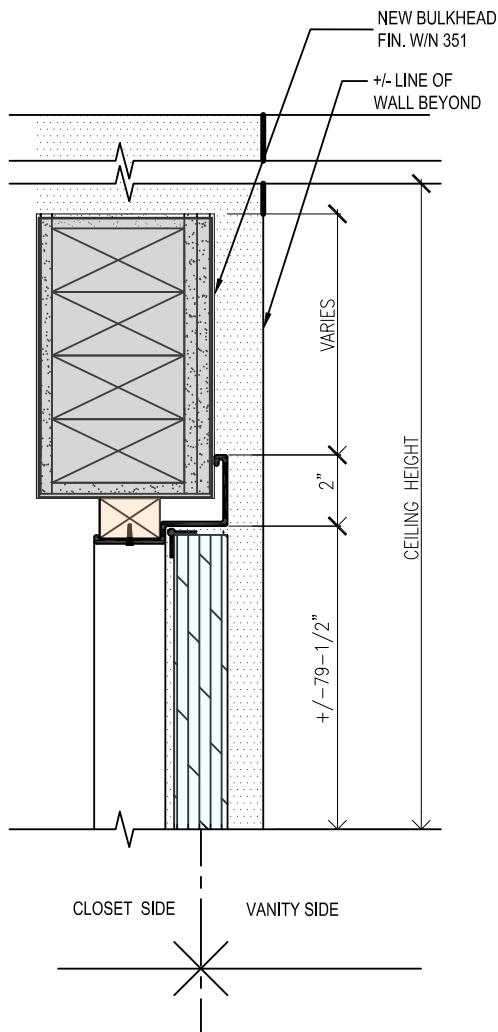
CORRIDOR SIDE VANITY SIDE

4/A

## SECT. ALT. NO. 4

SCALE: N.T.S.

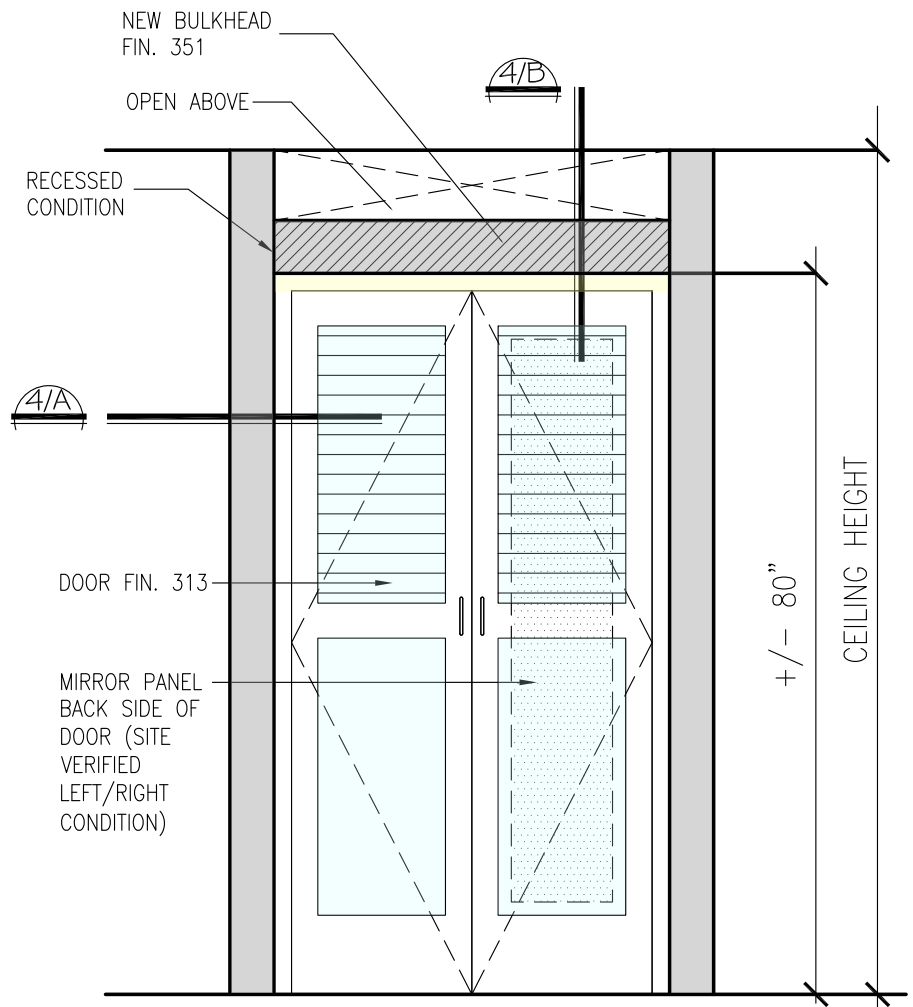
VANITY SIDE BATHRM. SIDE



4/B

## HEAD DETAIL NO. 4

SCALE: N.T.S.



4

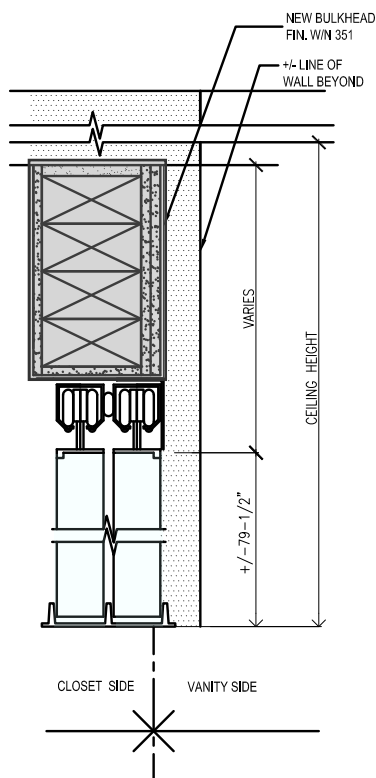
## DOOR ELEV. / NO. 4

SCALE: N.T.S.



## CONDITION NO.5

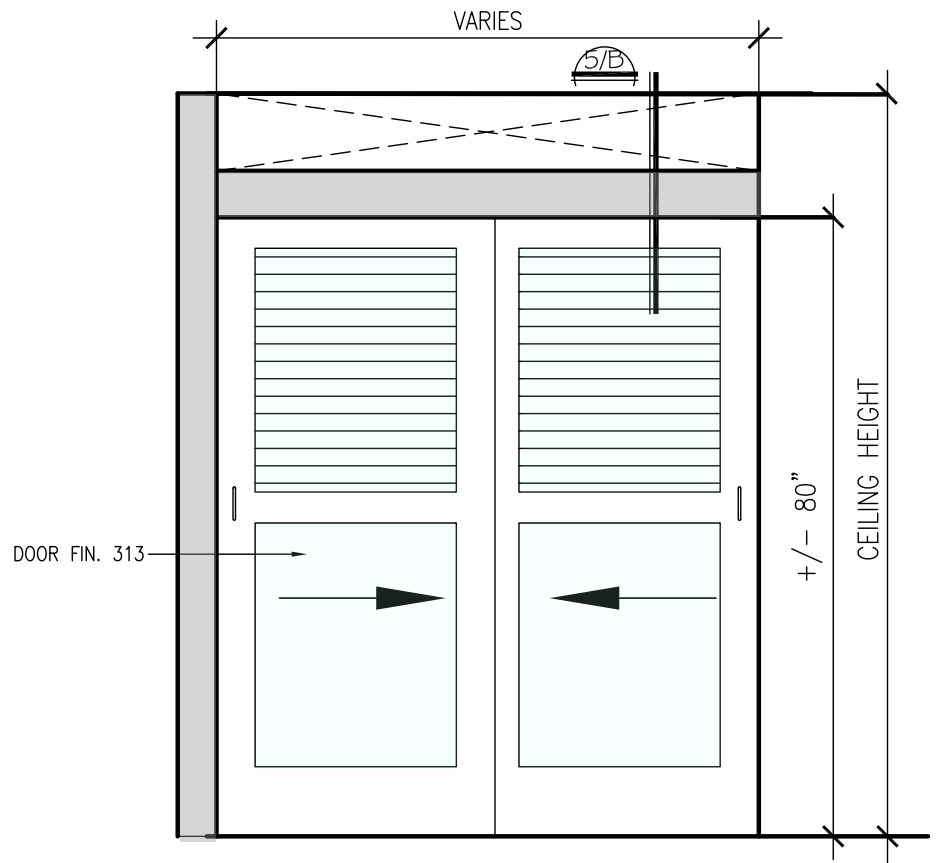
SCALE: N.T.S.



## HEAD DETAIL NO.5

SCALE: 3" = 1'-0"

(PER SITE (CONDITION MAY FIND SIMILAR BULKHEAD TO CONDITION NO. 1)



## DOOR ELEV. / NO.5

SCALE: N.T.S.

NO FULL MIRROR AT SLIDING DOOR CONDITION;  
FULL LENGTH MIRROR LOCATION PER CD'S

[Home](#)[About](#)[Products](#)[Contact](#)[Subr](#)

furniture hardware and stone products s

[Decorative Hardware](#)[Panel Stay Plates](#)[Hospitality Stone](#)[Functional Hardware](#)[Cast Brass Pulls](#)[Bar Pulls  
Birdcage Hardware](#)[Bronze  
Wooden Hardware](#)[Glass Knobs and Pulls  
Knobs](#)[Aluminum](#)

## PULLS



Image is not to full scale.  
Actual pull is larger than this photograph.

### JGE #2375-160 Drawer Pull, Matte Chrome

Finish: Matte Chrome

Overall Length: 7-1/8 in. (181mm)

Projection: 1-5/8 in. (41mm)

Material: Zinc Alloy

Mounting Holes: 6-5/16 in. (160mm)

Style: Transitional

>> 1 2 3 4 5 6 7 8 9 10 11 12 13 14 15 16 17 18 19 20 21

[Decorative Hardware](#) | [Panel Stay Plates](#) | [Hospitality Stone](#) | [Functional Hardware](#)

8901 Kelso Drive, Baltimore, MD 21221 | tel. 410-918-1200 | fax. 410-918-0964  
Copyright ©2012 J.G.Edelen Company Inc. All Rights Reserved.



### Ball Catch

- Three-way catch with plate type strike
- Ideal for smaller cabinet doors or panes
- The strike slides between two stainless steel balls that are under spring tension; as the strike engages, the door is held tightly shut
- Strike can enter body from either side or front
- Spring tension is easily adjusted to suit field conditions
- Body can be surface applied or mortised
- Brass construction
- Meets ANSI/BHMA 156.9, B13302

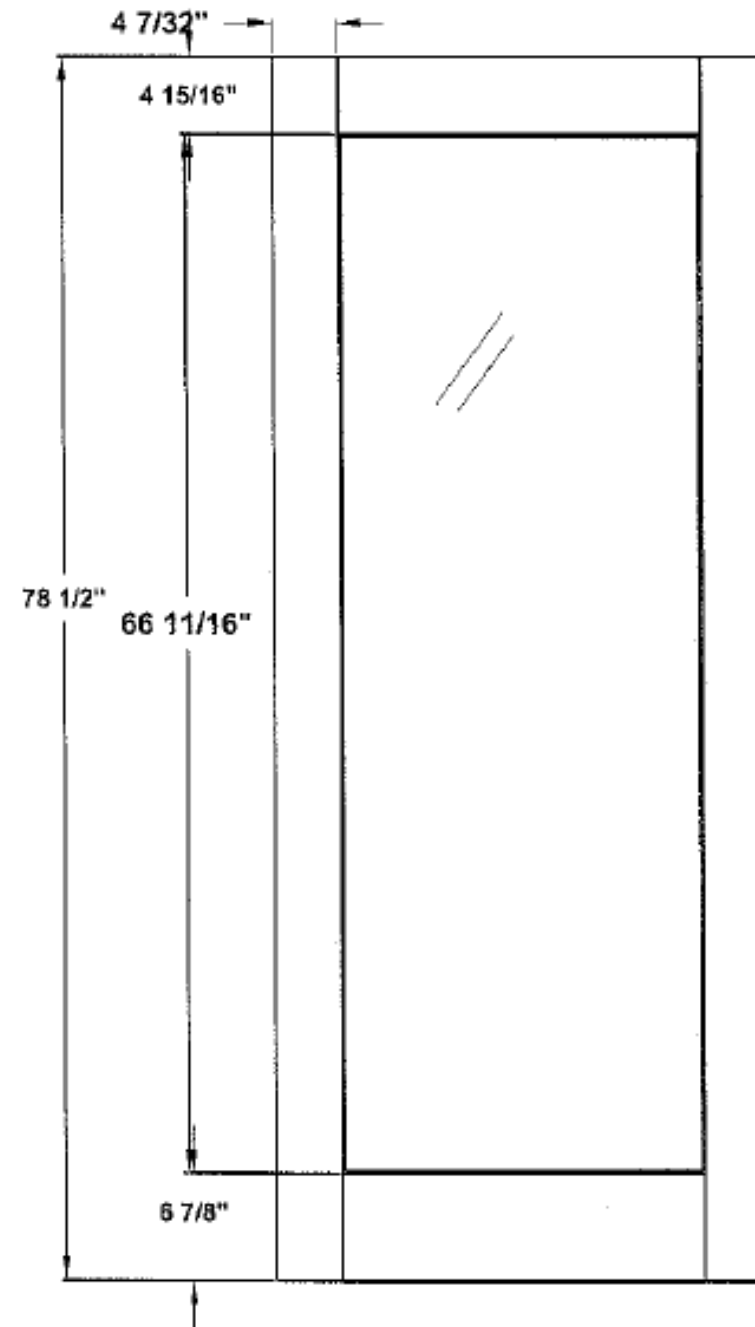
Dimensions:                    -Body is 1/2" wide x 2-3/16" high x 1/2" deep  
   -Strike is 3/8" wide x 1-3/8" high x 5/8" deep  
Finish:                            US26D



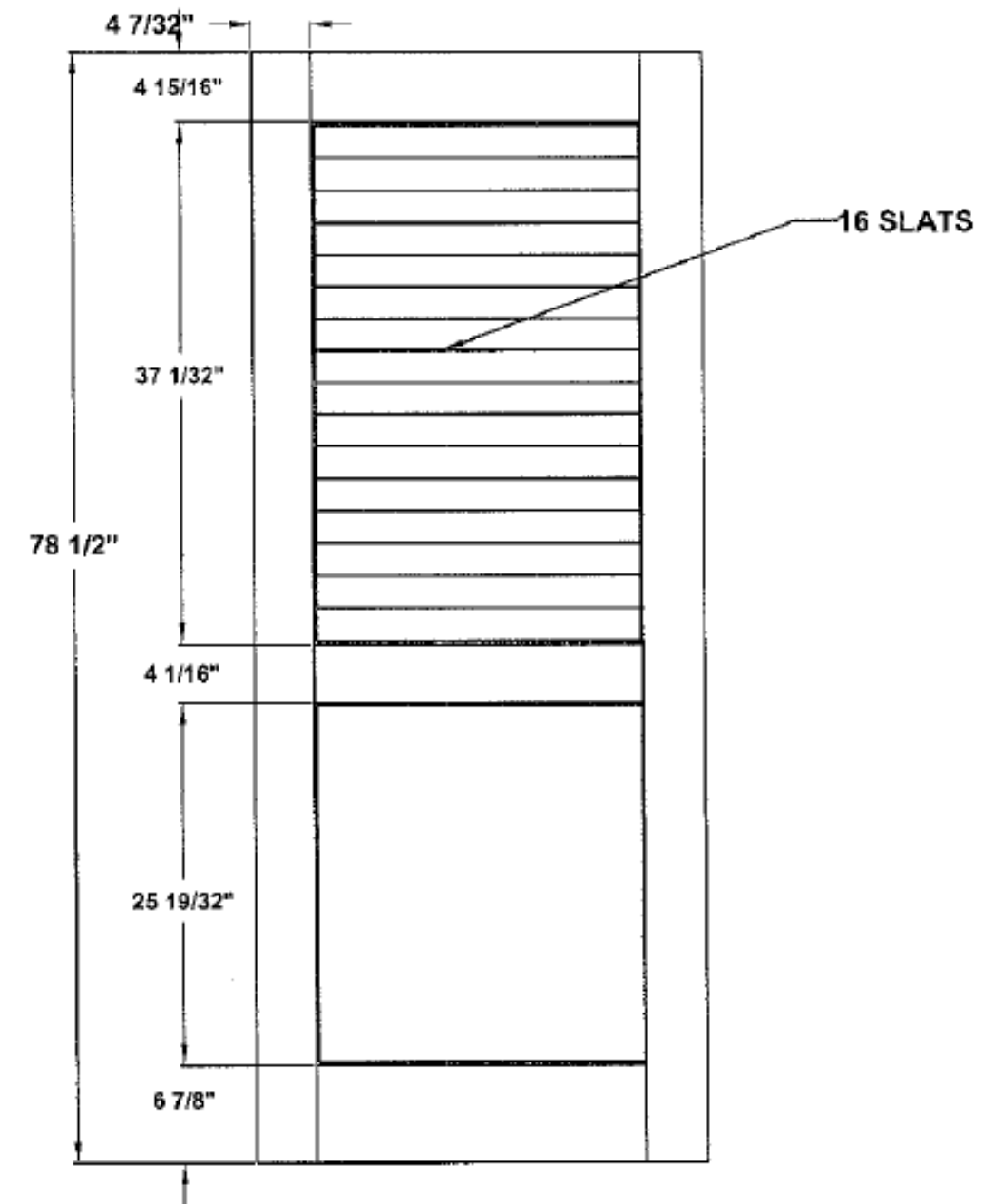




# BACK



# FRONT



## Specification sheet

Title

Half Plantation Louver door with mirror

Height

78-1/2

Creation date  
07-06-2012

Prep. by: MJL

Revision date

Rev.

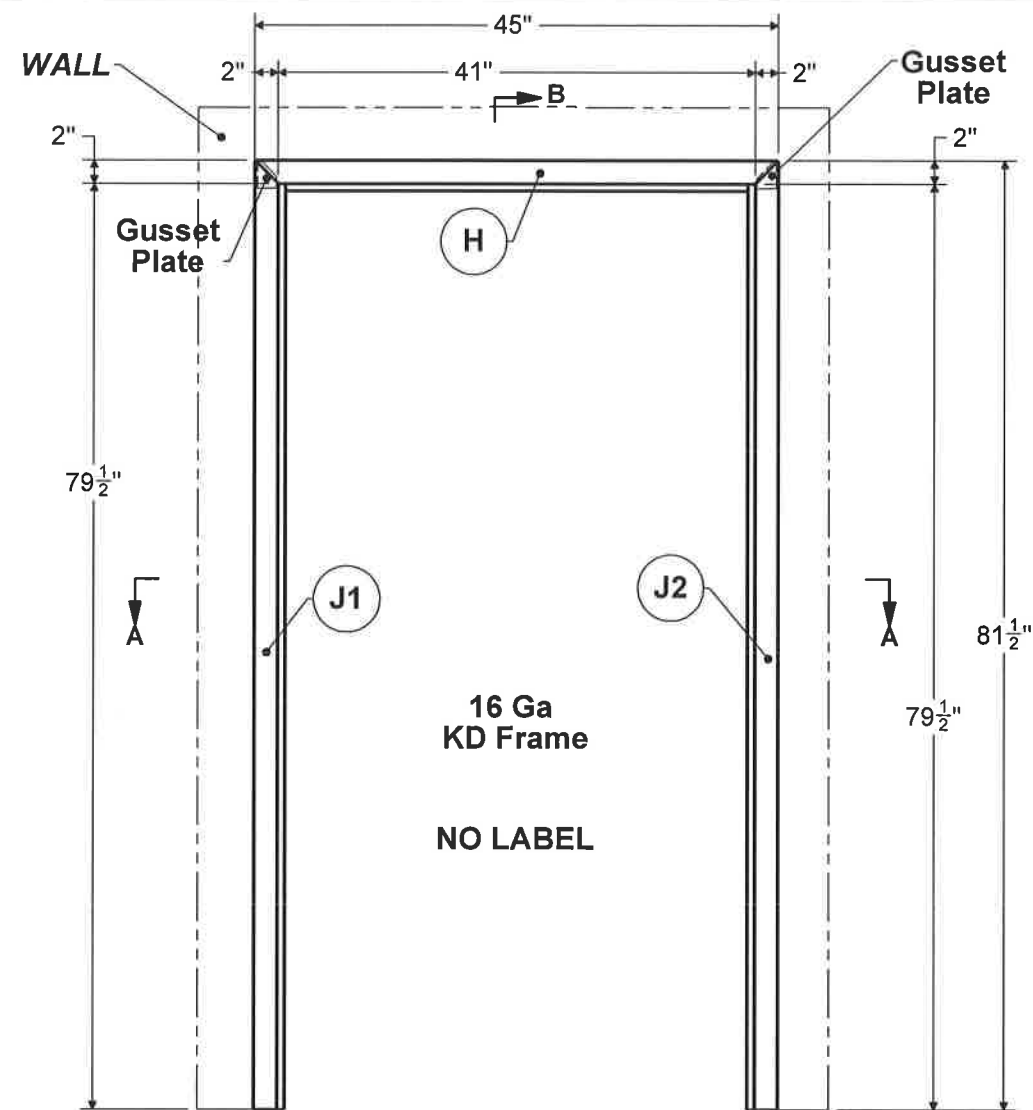
Scale nts

**ALCO DOORS**

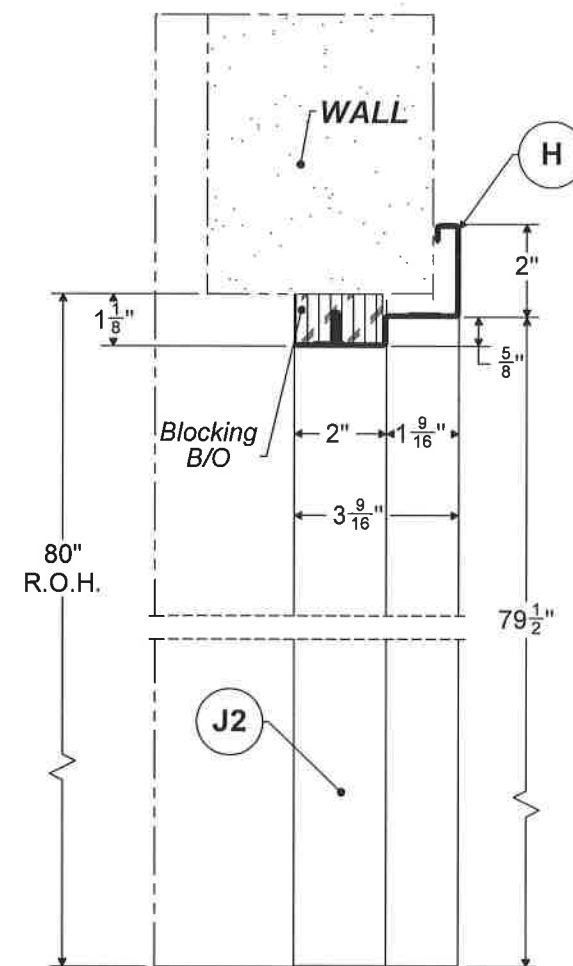
A DIVISION OF

AMERICAN LUMBER CORPORATION

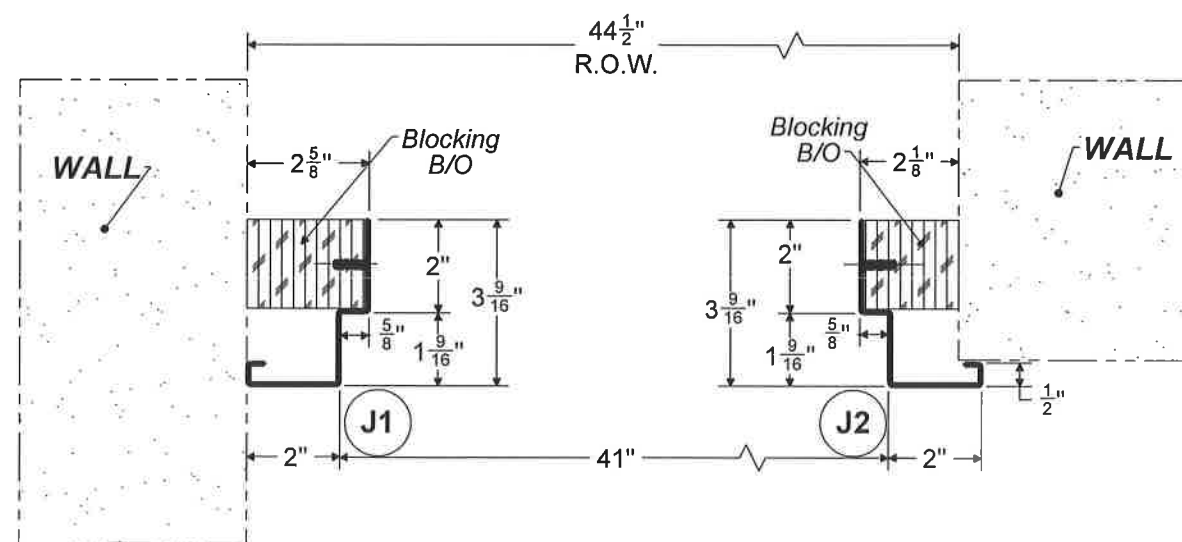
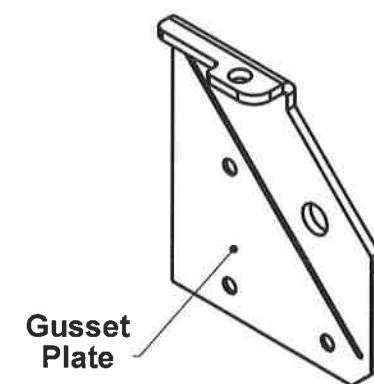
**M4G.138**



**ELEVATION**



**SECTION B-B**



**SECTION A-A**

**NOTE:**

- Pair Swing Typical;
- Hardware Prep (3) 3 1/2x3 1/2 Butt Hinges Square Corner;
- Attach Jams and Head with #8 Flat Head Screws, B/O.